

LED Spot Light

LT-SL Series





Technical information

- LT-SL(High): LED up to 60W, HID up to 150W
- LT-SL(Medium): LED up to 40W, HID up to 70W
- LT-SL:(Small) LED up to 20W, HID up to 35W
- LED system efficiency up to 100 lm/W
- high pressure die cast aluminium
- adjustable head joint
- delivered with attached power cord
- IP67
- CE Certification
- Colour: Bronze or special finish

Light distribution

Rotation-symmetrical and asymmetrical optics for

- horizontal and vertical lighting tasks
- roads and pathways



**S Spot
(15-18°)**



Spot(19-23°)



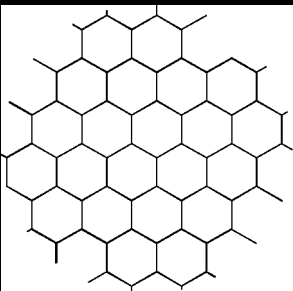
Medium(27-36°)



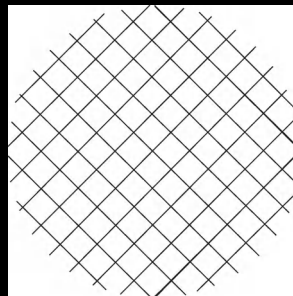
Flood(55-60°)



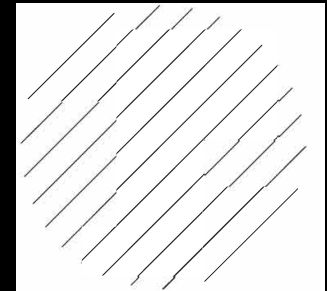
Elliptical light(40*73°)



honeycomb grid, black



structured glass



linear diffuser

2700/3000K/4000K

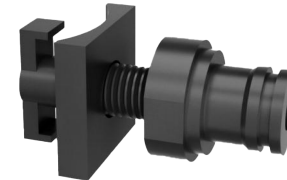
5000K optics

Precisely bundled light and high visual comfort using an optimised reflector geometry and deeply recessed light sources



Maximum scope for design

enables planners to create impressive schemes that are ideally harmonised with the surrounding environment using individual, selfconfigured luminaire forms..





SB Surface Base Mount



JB Junction Box(USA)



Pole cap



WM Wall Mount(USA)



TM Tree Mount



GS Ground Stake-A



GS Ground Stake-B

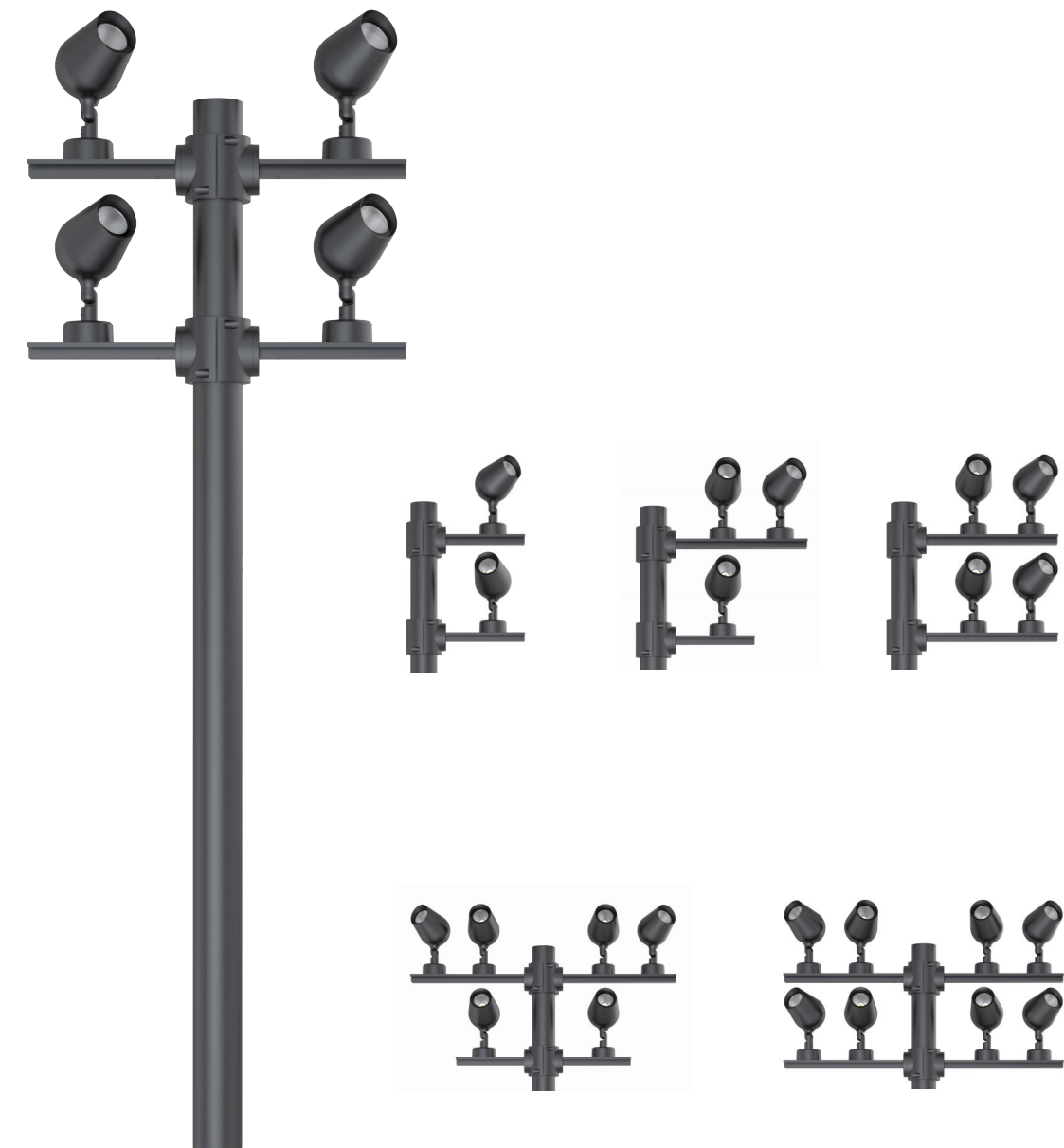


GS Ground Stake-C

Design line

—Unilateral: 2Fold 3Fold 4Fold

—Bilateral: 4Fold 6Fold 8Fold



LI-TIAN LIGHTING



Design line

—Unilateral: 2Fold 3Fold 4Fold

—Bilateral: 2Fold 4Fold 6Fold

According to design needs, free combination.





Design line Candelabra

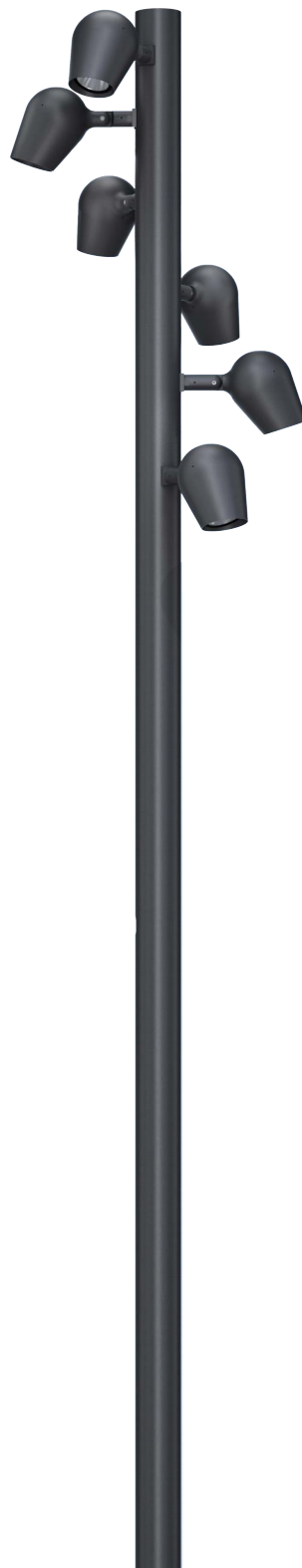
- 1-fold
- 2-fold (120° and 180°)
- 3-fold (360°)
- Suitable for $\phi 60$ $\phi 76$ Pole



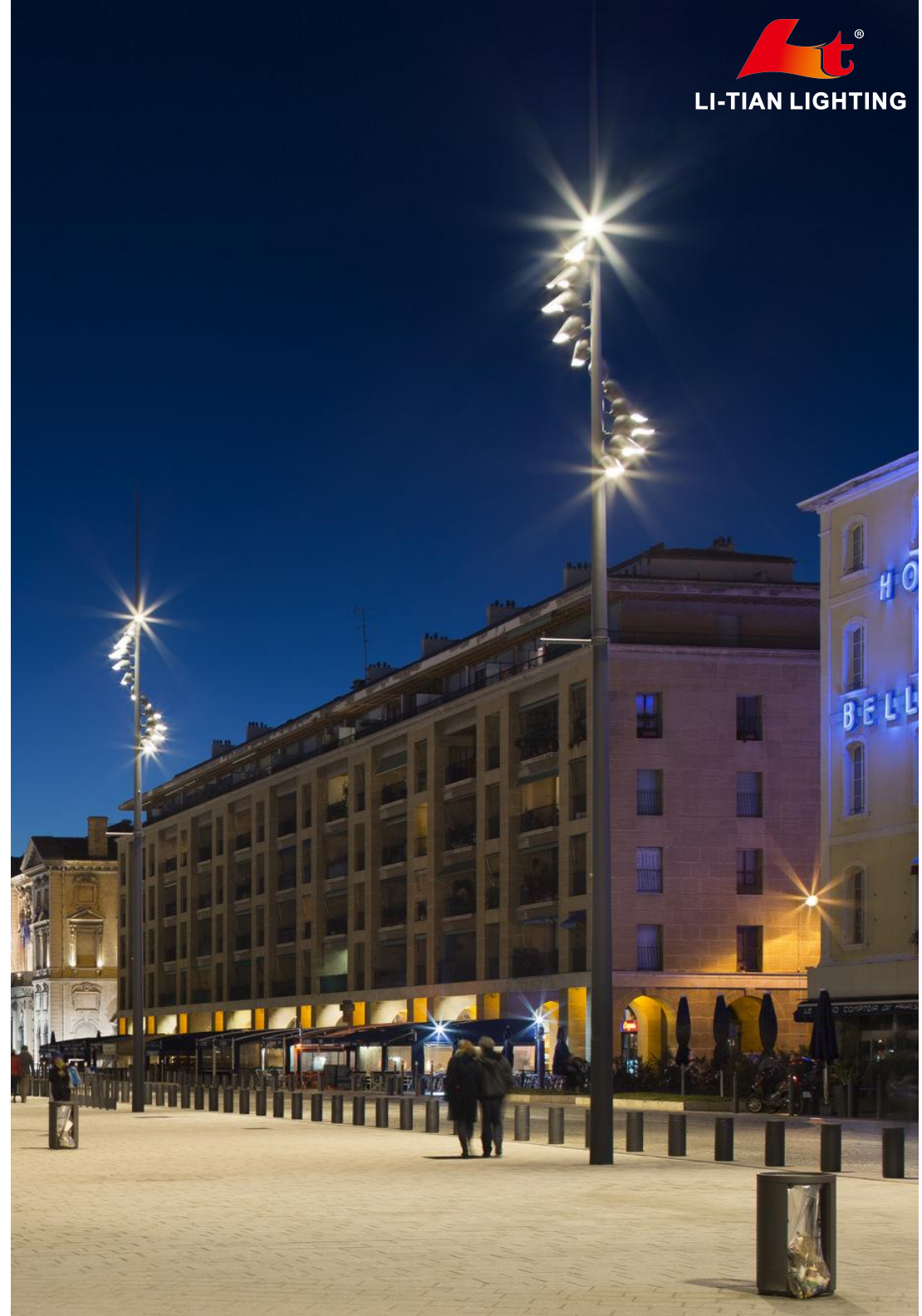
Design line Sistema

— arrangement of luminaire heads around the pole's axis between 0° and 360°- one or various staggered levels.

— Suitable for $\phi 60$ — $\phi 200$ (mm) Pole



LI-TIAN LIGHTING



For advertising sign lighting

 LI-TIAN LIGHTING



www.ilitianled.com